

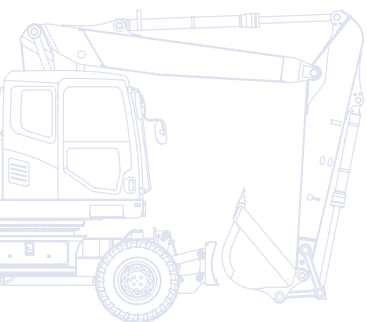
KOMATSU

PW
180



Hydraulic Wheeled Excavator

PW180-7



ENGINE POWER
116 kW / 156 HP @ 2.000 rpm

OPERATING WEIGHT
16.140 - 18.560 kg

BUCKET CAPACITY
max. 1,13 m³

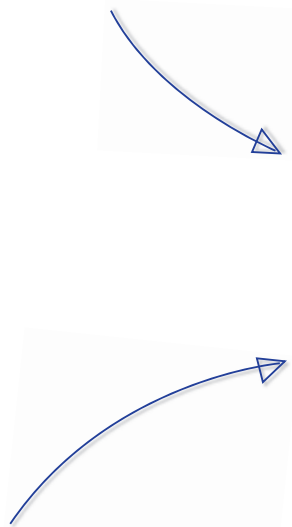
Courtesy of Machine.Market

Walk-Around

The experts at Komatsu designed the PW180-7 with a lifting performance that meets the requirements for safe and productive work on any job site. Powerful and versatile, this hydraulic wheeled excavator is the perfect machine in all applications. Performance and quality. It's what you can expect from all Komatsu equipment, and the PW180-7 delivers.

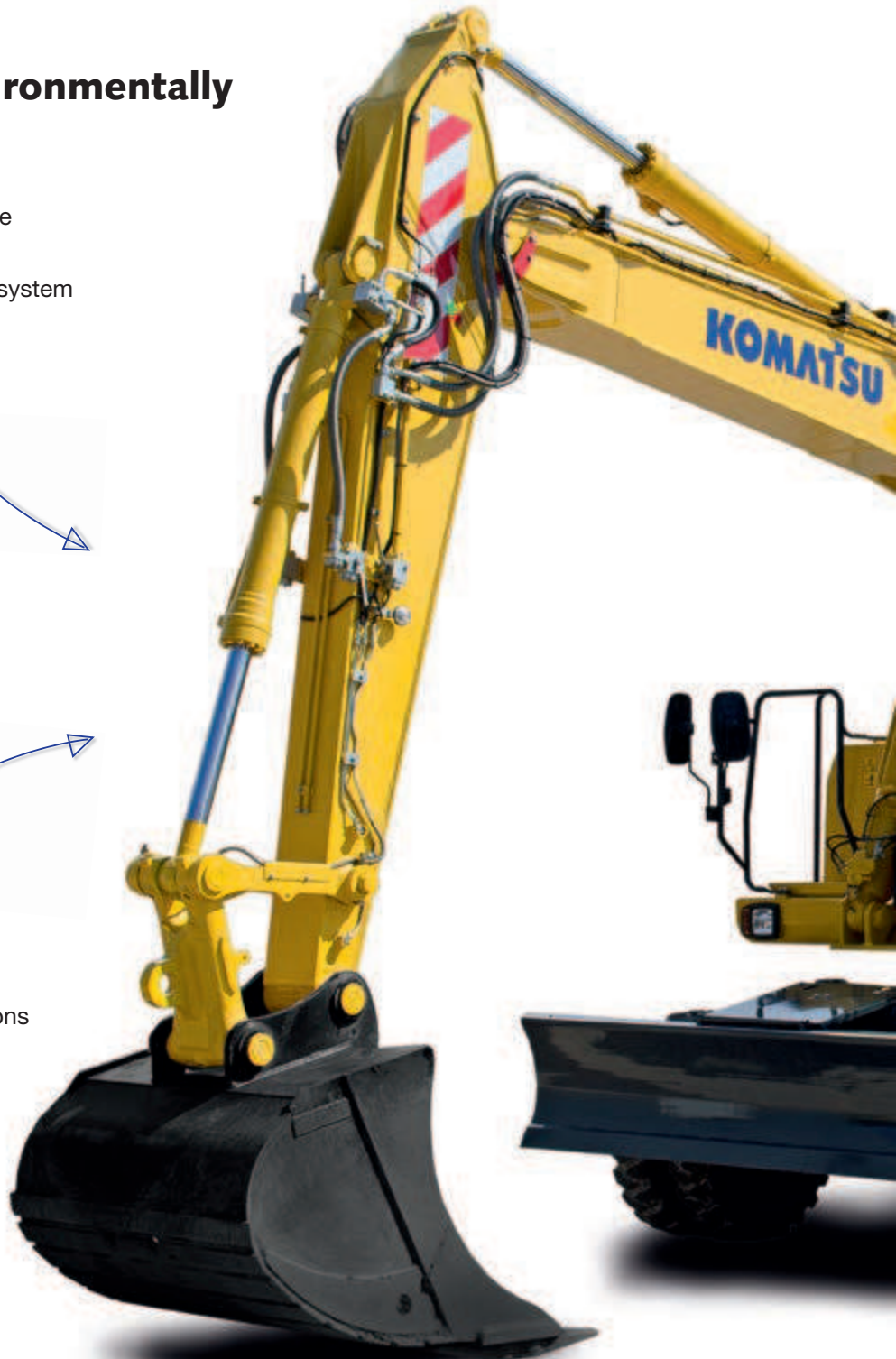
Powerful and environmentally friendly

- Excellent travel performance
- Low consumption ecot3 engine
- Meets EU Stage IIIA
- Komatsu integrated hydraulic system
- High lift capacity



Total versatility

- Ideal for a wide range of applications
- Additional hydraulic circuit
- A wide choice of options



PW180-7

ENGINE POWER
116 kW / 156 HP @ 2.000 rpm

OPERATING WEIGHT
16.140 - 18.560 kg

BUCKET CAPACITY
max. 1,13 m³

First-class operator comfort

- Wide spacious cab
- Air-suspended, heated seat
- Automatic climate control
- Convenient storage space
- Large, widescreen TFT monitor panel



State of the art controls

- Proportional controls for attachments
- Easy operation
- Selectable working modes
- Flexible and versatile

Easy maintenance

- Simple and convenient service
- Easy radiator access
- Centralised greasing system
- Large TFT monitor
- Electric refuelling pump



KOMTRAX

Komatsu Wireless Monitoring
System

Specifications

ENGINE

Model	Komatsu SAA6D107E-1
Type	Common rail direct injection, water-cooled, emissionised, turbocharged, after-cooled diesel
Engine power	
at rated engine speed	2.000 rpm
ISO 14396	116 kW/156 HP
ISO 9249 (net engine power)	109 kW/146 HP
No. of cylinders	6
Bore × stroke	107 × 124 mm
Displacement	6,69 ltr
Batteries	2 × 12 V/120 Ah
Alternator	24 V/60 A
Starter motor	24 V/5,5 kW
Air filter type	Double element type with monitor panel dust indicator and auto dust evacuator
Cooling	Suction type cooling fan

HYDRAULIC SYSTEM

Type	HydrauMind. Closed-centre system with load sensing and pressure compensation valves
Additional circuits	Depending on the specification up to 2 additional proportional control & quick coupler circuits can be installed
Main pump	Variable displacement piston pump supplying boom, arm, bucket, swing and travel circuits
Maximum pump flow	308 ltr/min
Relief valve settings	
Implement	380 bar
Travel	380 bar
Swing	290 bar
Pilot circuit	36 bar

BRAKE SYSTEM

Type	Dual circuit hydraulic braking system supplied from a separate gear pump.
Service brakes	Pedal actuated wet multi-disc brakes integrated into the axle hubs.
Parking brake	Electrically actuated wet multi-disc “spring actuation hydraulic release” brake integrated into the transmission.

ENVIRONMENT

Engine emissions	Fully complies with EU Stage IIIA exhaust emission regulations
Noise levels	
LwA external	102 dB(A) (2000/14/EC Stage II)
LpA operator ear	72 dB(A) (ISO 6396 dynamic test)
Vibration levels (EN 12096:1997)	
Hand/arm	≤ 2,5 m/s ² (uncertainty K = 0,91 m/s ²)
Body	≤ 0,5 m/s ² (uncertainty K = 0,22 m/s ²)
Contains fluorinated greenhouse gas HFC-134a (GWP 1430).	
Quantity of gas 0,9 kg, CO ₂ equivalent 1,29 t.	

SWING SYSTEM

Type	Axial piston motor driving through planetary double reduction gearbox
Swing lock	Electrically actuated wet multi-disc brake integrated into swing motor
Swing speed	0 - 11,5 rpm
Swing torque	43 kNm

TRANSMISSION

Type	Fully automatic power shift transmission with permanent 4 wheel drive
Travel motors	One variable displacement axial piston motor
Maximum pressure	380 bar
Travel modes	Automatic + 3 travel modes
Max. travel speeds	
Hi / Lo / Creep	35,0 / 9,5 / 2,5 km/h
A max. speed restriction of 20 km/h is available as an option.	
Maximum drawbar pull	10.500 kg
Axle oscillation	10° Lockable in any position from the operator cab.

STEERING SYSTEM

Steering control	Hydraulic steering system supplied from a separate gear pump and controlled through LS orbitrol & priority valves.
Minimum turning radius	6.800 mm (to center of outer wheel)

SERVICE REFILL CAPACITIES

Fuel tank	325 ltr
Radiator	17,6 ltr
Engine oil	26 ltr
Swing drive	4,5 ltr
Hydraulic tank	120 ltr
Transmission	4,85 ltr
Front differential	11,5 ltr
Rear differential	9,5 ltr
Front axle hub	2,85 ltr
Rear axle hub	2,0 ltr
Swing pinion grease bath amount	10,5 ltr

OPERATING WEIGHT (APPR.)

Undercarriage attachment type	Mono boom	Two-piece boom
Without	16.140 kg	16.370 kg
Rear blade	17.050 kg	17.280 kg
Rear outrigger	17.270 kg	17.500 kg
2 outriggers + blade	18.110 kg	18.340 kg
4 outriggers	18.320 kg	18.560 kg

Operating weight, including specified work equipment, 2,6 m arm, operator, lubricant, coolant, full fuel tank and the standard equipment. Weights are without bucket.

MAX. BUCKET CAPACITY AND WEIGHT

Arm length	Mono boom		
	2,25 m	2,6 m	2,9 m
Material weight up to 1,2 t/m ³	1,13 m ³ 675 kg	1,04 m ³ 645 kg	0,94 m ³ 615 kg
Material weight up to 1,5 t/m ³	0,94 m ³ 615 kg	0,85 m ³ 585 kg	0,75 m ³ 525 kg
Material weight up to 1,8 t/m ³	0,85 m ³ 585 kg	0,75 m ³ 525 kg	0,66 m ³ 495 kg
Arm length	Two-piece boom		
	2,25 m	2,6 m	2,9 m
Material weight up to 1,2 t/m ³	1,13 m ³ 675 kg	1,04 m ³ 645 kg	0,94 m ³ 615 kg
Material weight up to 1,5 t/m ³	0,94 m ³ 615 kg	0,85 m ³ 585 kg	0,75 m ³ 525 kg
Material weight up to 1,8 t/m ³	0,85 m ³ 585 kg	0,75 m ³ 525 kg	0,66 m ³ 495 kg

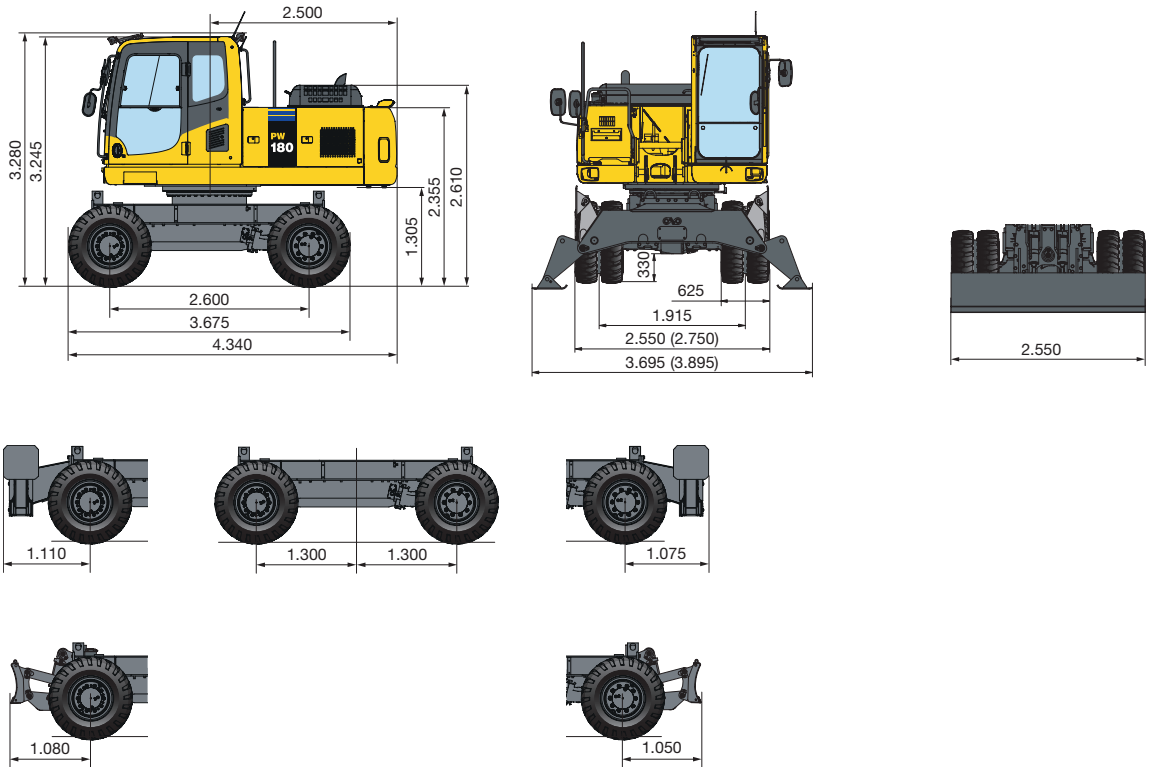
Max. capacity and weight have been calculated according to ISO 10567:2007.

Please consult with your distributor for the correct selection of buckets and attachments to suit the application.

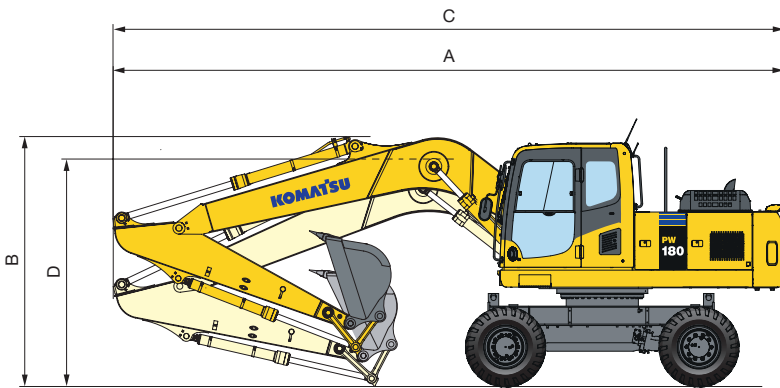
BUCKET AND ARM FORCE

Arm length	2,25 m	2,6 m	2,9 m
Bucket digging force	115 kN	115 kN	115 kN
Bucket digging force at PowerMax	123 kN	123 kN	123 kN
Arm crowd force	89 kN	80 kN	74 kN
Arm crowd force at PowerMax	95 kN	88 kN	79 kN

Dimensions



MONO BOOM



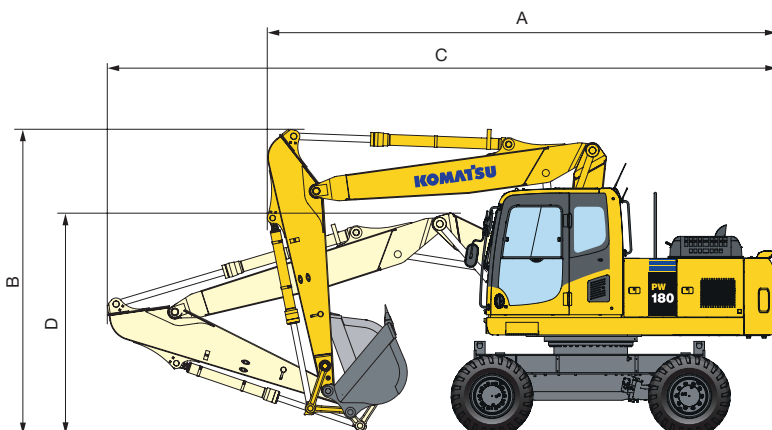
Driving position

Arm length	A	B
2.250 mm	8.900 mm	3.720 mm
2.600 mm	8.900 mm	3.720 mm
2.900 mm	8.900 mm	3.720 mm

Transport position

Arm length	C	D
2.250 mm	8.960 mm	3.160 mm
2.600 mm	8.965 mm	3.195 mm
2.900 mm	8.970 mm	3.290 mm

TWO-PIECE BOOM



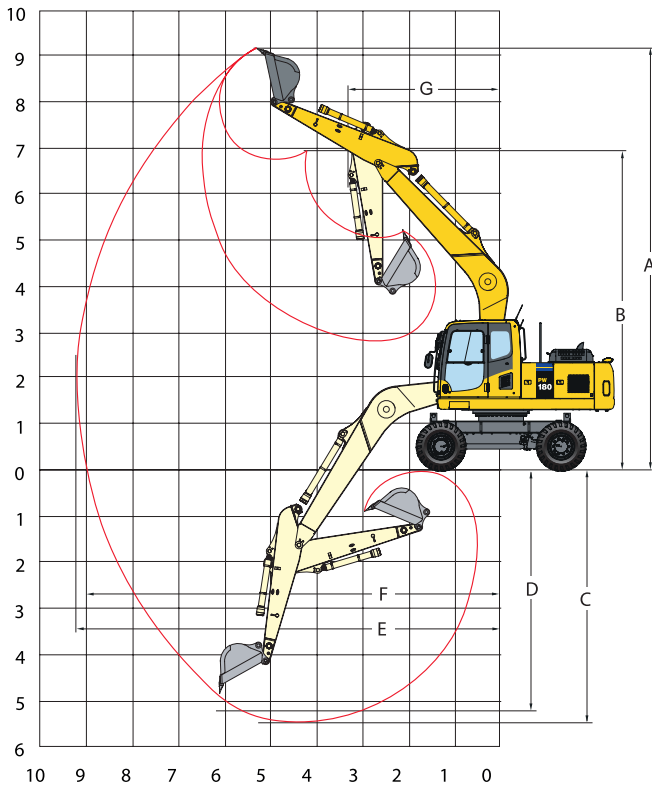
Driving position

Arm length	A	B
2.250 mm	6.795 mm	3.970 mm
2.600 mm	6.720 mm	3.970 mm
2.900 mm	6.850 mm	3.960 mm

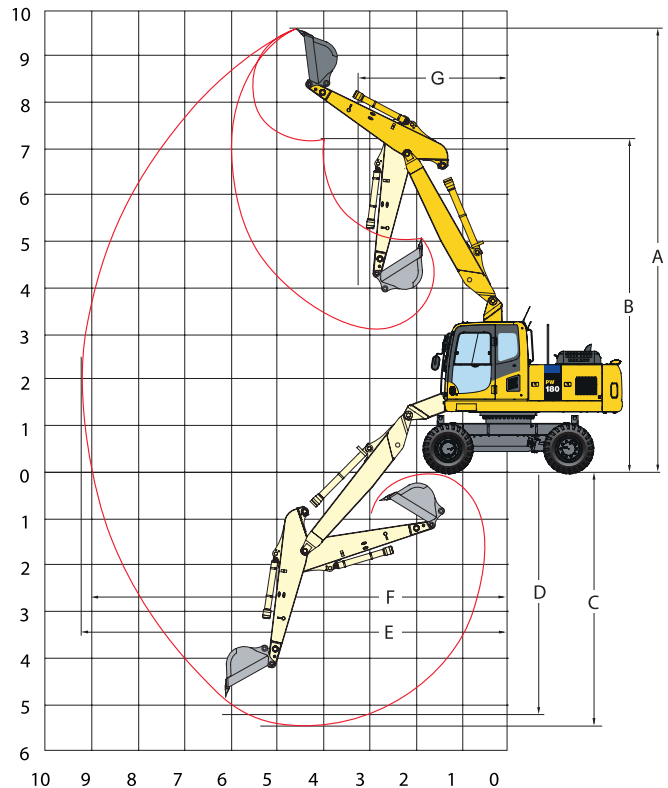
Transport position

Arm length	C	D
2.250 mm	8.880 mm	3.180 mm
2.600 mm	8.870 mm	3.275 mm
2.900 mm	8.845 mm	3.375 mm

MONO BOOM



TWO-PIECE BOOM



MONO BOOM




ARM LENGTH	2,25 m	2,6 m	2,9 m
A Max. digging height	9.460 mm	9.560 mm	9.755 mm
B Max. dumping height	6.915 mm	7.065 mm	7.235 mm
C Max. digging depth	5.320 mm	5.675 mm	5.965 mm
D Max. digging depth of cut for 2,44 m level	4.665 mm	5.180 mm	5.510 mm
E Max. digging reach	9.060 mm	9.345 mm	9.930 mm
F Max. digging reach at ground level	8.875 mm	9.170 mm	9.760 mm
G Min. swing radius	3.545 mm	3.830 mm	4.060 mm

TWO-PIECE BOOM

ARM LENGTH	2,25 m	2,6 m	2,9 m
A Max. digging height	9.940 mm	10.130 mm	10.350 mm
B Max. dumping height	7.285 mm	7.490 mm	7.710 mm
C Max. digging depth	5.400 mm	5.740 mm	6.045 mm
D Max. digging depth of cut for 2,44 m level	4.650 mm	5.125 mm	5.760 mm
E Max. digging reach	9.080 mm	9.400 mm	9.685 mm
F Max. digging reach at ground level	8.910 mm	9.230 mm	9.510 mm
G Min. swing radius	3.065 mm	3.310 mm	3.510 mm

Lifting Capacity

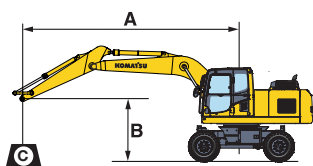
Mono boom / undercarriage width 2,55 m

Arm length	A B	⊗		7,5 m		6,0 m		4,5 m		3,0 m		1,5 m		
		⊗	⊗	⊗	⊗	⊗	⊗	⊗	⊗	⊗	⊗	⊗	⊗	
		⊗	⊗	⊗	⊗	⊗	⊗	⊗	⊗	⊗	⊗	⊗	⊗	
 <p>Without stabilizer</p>	2,25 m	7,5 m kg	*2.700	*2.700										
		6,0 m kg	*2.450	1.900			3.500	2.500						
		4,5 m kg	2.200	1.450	2.200	1.500	3.400	2.400	5.650	3.950				
		3,0 m kg	1.950	1.250	2.150	1.450	3.200	2.200	5.150	3.550				
		1,5 m kg	1.850	1.200	2.100	1.350	3.000	2.000	4.700	3.100				
		0,0 m kg	1.900	1.200	2.000	1.300	2.850	1.900	4.450	2.900	*4.600	*4.600		
		- 1,5 m kg	2.100	1.350			2.800	1.850	4.400	2.850	*8.600	5.350		
		- 3,0 m kg	2.650	1.750			2.900	1.900	4.450	2.900	*7.700	5.550		
		- 4,5 m kg												
	2,6 m	7,5 m kg	*2.200	*2.200										
		6,0 m kg	*2.000	1.750			3.550	2.550						
		4,5 m kg	*2.000	1.350	2.250	1.550	3.450	2.450	*5.500	4.050				
		3,0 m kg	1.800	1.200	2.200	1.450	3.250	2.250	5.250	3.600	10.450	6.700		
		1,5 m kg	1.700	1.100	2.100	1.350	3.050	2.050	4.750	3.200				
		0,0 m kg	1.750	1.100	2.000	1.300	2.900	1.900	4.450	2.900	*5.300	5.300		
		- 1,5 m kg	1.950	1.250	2.000	1.250	2.800	1.800	4.350	2.800	*8.350	5.300	*5.150	*5.150
		- 3,0 m kg	2.400	1.550			2.850	1.850	4.400	2.850	*8.750	5.500		
		- 4,5 m kg	*2.700	2.450					*3.600	3.000				
	2,9 m	7,5 m kg	*1.900	*1.900			*2.550	2.500						
		6,0 m kg	*1.750	1.550			3.600	2.550						
		4,5 m kg	*1.700	1.250	2.250	1.500	3.450	2.450						
		3,0 m kg	1.650	1.050	2.150	1.450	3.250	2.250	5.300	3.650	10.700	6.950		
		1,5 m kg	1.600	1.000	2.050	1.350	3.000	2.000	4.800	3.200				
		0,0 m kg	1.600	1.000	1.950	1.250	2.850	1.850	4.450	2.850	*5.500	5.250		
		- 1,5 m kg	1.750	1.100	1.900	1.200	2.750	1.750	4.300	2.750	*8.000	5.200	*4.800	*4.800
		- 3,0 m kg	2.150	1.350			2.750	1.750	4.300	2.750	*8.000	5.350	*7.650	*7.650
		- 4,5 m kg	*2.850	2.050					*4.300	2.950	*5.700	5.650		
 <p>Front or rear blade</p>	2,25 m	7,5 m kg	*2.700	*2.700										
		6,0 m kg	*2.450	2.250			*4.400	2.900						
		4,5 m kg	*2.400	1.750	*2.600	1.800	*5.450	2.800	*6.650	4.600				
		3,0 m kg	*2.450	1.550	4.250	1.750	*5.950	2.600	*7.850	4.050				
		1,5 m kg	*2.700	1.450	4.150	1.650	6.100	2.450	*8.600	3.650				
		0,0 m kg	*3.050	1.500	4.100	1.600	5.900	2.300	*8.650	3.300	*4.600	*4.600		
		- 1,5 m kg	*3.800	1.650			*5.750	2.250	*7.700	3.250	*8.600	6.550		
		- 3,0 m kg	*3.600	2.100			*4.200	2.300	*6.000	3.500	*7.700	6.750		
		- 4,5 m kg												
	2,6 m	7,5 m kg	*2.200	*2.200										
		6,0 m kg	*2.000	*2.000			*3.950	2.950						
		4,5 m kg	*2.000	1.650	*3.150	1.850	*5.000	2.850	*5.450	4.700				
		3,0 m kg	*2.050	1.450	4.300	1.750	*5.800	2.650	*7.500	4.150	*12.100	8.000		
		1,5 m kg	*2.250	1.350	4.200	1.650	6.150	2.450	*8.500	3.700				
		0,0 m kg	*2.600	1.400	4.100	1.600	5.950	2.300	*8.700	3.300	*5.300	*5.300		
		- 1,5 m kg	*3.200	1.550	4.050	1.550	5.850	2.200	*8.000	3.300	*8.350	6.500	*5.150	*5.150
		- 3,0 m kg	*3.700	1.900			*4.700	2.250	*6.550	3.450	*8.750	6.700		
		- 4,5 m kg	*2.700	*2.700					*3.600	*3.600				
	2,9 m	7,5 m kg	*1.900	*1.900			*2.550	*2.550						
		6,0 m kg	*1.750	*1.750			*3.650	2.950						
		4,5 m kg	*1.700	1.500	*3.250	1.850	*4.450	2.850						
		3,0 m kg	*1.800	1.300	4.300	1.750	*5.550	2.650	*7.150	4.200	*11.250	8.250		
		1,5 m kg	*1.950	1.250	4.150	1.650	*6.100	2.450	*8.200	3.700				
		0,0 m kg	*2.200	1.250	4.050	1.550	5.900	2.250	*8.650	3.300	*5.550	*5.550		
		- 1,5 m kg	*2.700	1.400	4.000	1.500	5.800	2.150	*8.150	3.200	*8.000	6.400	*4.800	*4.800
		- 3,0 m kg	*3.600	1.700			*4.950	2.150	*6.850	3.400	*9.450	6.550	*7.650	*7.650
		- 4,5 m kg	*2.850	2.500					*4.300	3.550	*5.700	*5.700		
 <p>Rear outrigger</p>	2,25 m	7,5 m kg	*2.700	*2.700										
		6,0 m kg	*2.450	*2.450			*4.400	3.400						
		4,5 m kg	*2.400	2.100	*2.600	2.150	*5.450	3.300	*6.700	5.400				
		3,0 m kg	*2.450	1.850	4.400	2.100	*5.950	3.100	*7.850	4.900				
		1,5 m kg	*2.700	1.750	4.300	2.000	6.350	2.900	*8.700	4.350				
		0,0 m kg	*3.050	1.800	4.250	1.950	6.150	2.750	*8.600	4.100	*4.600	*4.600		
		- 1,5 m kg	*3.800	2.000			*5.750	2.700	*7.700	3.950	*8.600	8.150		
		- 3,0 m kg	*3.600	2.550			*4.200	2.750	*6.000	4.050	*7.700	*7.700		
		- 4,5 m kg												
	2,6 m	7,5 m kg	*2.200	*2.200										
		6,0 m kg	*2.000	*2.000			*3.950	3.450						
		4,5 m kg	*2.000	2.000	*3.150	2.200	*5.000	3.350	*5.450	5.500				
		3,0 m kg	*2.050	1.750	*4.450	2.100	*5.800	3.150	*7.500	4.900	*12.100	9.700		
		1,5 m kg	*2.250	1.650	4.300	2.000	*6.250	2.950	*8.500	4.450				
		0,0 m kg	*2.600	1.700	4.250	1.950	6.150	2.750	*8.700	4.050	*5.300	*5.300		
		- 1,5 m kg	*3.200	1.850	*4.050	1.900	*5.900	2.700	*8.000	3.950	*8.350	8.100	*5.150	*5.150
		- 3,0 m kg	*3.700	2.300			*4.700	2.700	*6.550	4.200	*8.750	8.300		
		- 4,5 m kg	*2.700	*2.700					*3.600	*3.600				
	2,9 m	7,5 m kg	*1.900	*1.900			*2.550	*2.550						
		6,0 m kg	*1.750	*1.750			*3.650	3.450						
		4,5 m kg	*1.700	*1.700	*3.250	2.200	*4.450	3.350						
		3,0 m kg	*1.800	1.600	*4.300	2.100	*5.500	3.150	*7.200	4.950	*11.250	9.950		
		1,5 m kg	*1.950	1.550	4.300	2.000	*6.100	2.900	*8.250	4.450				
		0,0 m kg	*2.200	1.550	4.200	1.900	6.150	2.700	*8.650	4.000	*5.550	*5.550		
		- 1,5 m kg	*2.700	1.700	4.150	1.850	*6.000	2.650	*8.150	3.900	*8.000	7.950	*4.800	*4.800
		- 3,0 m kg	*3.600	2.050			*4.950	2.650	*6.850	4.100	*9.450	8.100	*7.650	*7.650
		- 4,5 m kg	*2.850	*2.850					*4.300	4.300	*5.700	*5.700		



Arm length	A	7,5 m		6,0 m		4,5 m		3,0 m		1,5 m			
 Outrigger + blade	2,25 m	7,5 m kg	*2.700	*2.700									
		6,0 m kg	*2.450	*2.450			*4.400	4.400					
		4,5 m kg	*2.400	*2.400	*2.600	*2.600	*5.450	4.300	*6.700	*6.700			
		3,0 m kg	*2.450	*2.450	*4.500	2.800	*5.900	4.100	*7.850	6.500			
		1,5 m kg	*2.700	2.400	4.750	2.700	*6.350	3.850	*8.800	6.050			
		0,0 m kg	*3.050	2.500	4.700	2.650	*6.300	3.500	*8.600	5.350	*4.600	*4.600	
	2,6 m	- 1,5 m kg	*3.800	2.750			*5.750	3.600	*7.800	5.350	*8.600	*8.600	
		- 3,0 m kg	*3.600	3.450			*4.200	3.750	*6.000	5.800	*7.700	*7.700	
		- 4,5 m kg											
		7,5 m kg	*2.200	*2.200									
		6,0 m kg	*2.000	*2.000			*3.950	*3.950					
		4,5 m kg	*2.000	*2.000	*3.150	2.900	*5.000	4.350	*5.500	*5.500			
2,9 m	3,0 m kg	*2.050	*2.050	*4.450	2.800	*5.750	4.150	*7.500	6.650	*12.100	*12.100		
	1,5 m kg	*2.250	*2.250	4.800	2.700	*6.250	3.900	*8.650	6.100				
	0,0 m kg	*2.600	2.300	4.700	2.650	*6.350	3.650	*8.600	5.400	*5.300	*5.300		
	- 1,5 m kg	*3.200	2.550	*4.050	2.600	*5.900	3.600	*8.100	5.350	*8.350	*8.350	*5.150	*5.150
	- 3,0 m kg	*3.700	3.100			*4.700	3.700	*6.550	5.750	*8.750	*8.750		
	- 4,5 m kg	*2.700	*2.700					*3.600	*3.600				

 Outrigger front + rear	2,25 m	7,5 m kg	*2.700	*2.700									
		6,0 m kg	*2.450	*2.450			*4.400	*4.400					
		4,5 m kg	*2.400	*2.400	*2.600	*2.600	*5.450	5.250	*6.700	*6.700			
		3,0 m kg	*2.450	*2.450	*4.500	3.450	*5.900	5.050	*7.850	*7.950			
		1,5 m kg	*2.700	*2.700	*4.950	3.400	*6.350	4.850	*8.800	7.700			
		0,0 m kg	*3.050	*3.050	*4.700	3.300	*6.300	4.450	*8.600	6.900	*4.600	*4.600	
	2,6 m	- 1,5 m kg	*3.800	3.450			*5.750	4.550	*7.800	6.900	*8.600	*8.600	
		- 3,0 m kg	*3.600	*3.600			*4.200	*4.200	*6.000	*6.000	*7.700	*7.700	
		- 4,5 m kg											
		7,5 m kg	*2.200	*2.200									
		6,0 m kg	*2.000	*2.000			*3.950	*3.950					
		4,5 m kg	*2.000	*2.000	*3.150	*3.150	*5.000	*5.000	*5.500	*5.500			
2,9 m	3,0 m kg	*2.050	*2.050	*4.450	3.500	*5.750	5.100	*7.500	*7.600	*12.100	*12.100		
	1,5 m kg	*2.250	*2.250	*4.900	3.400	*6.250	4.850	*8.650	7.750				
	0,0 m kg	*2.600	*2.600	*4.800	3.300	*6.350	4.450	*8.600	6.900	*5.300	*5.300		
	- 1,5 m kg	*3.200	3.200	*4.050	3.300	*5.900	4.550	*8.100	6.850	*8.350	*8.350	*5.150	*5.150
	- 3,0 m kg	*3.700	*3.700			*4.700	4.650	*6.550	*6.550	*8.750	*8.750		
	- 4,5 m kg	*2.700	*2.700					*3.600	*3.600				



- A – Reach from swing center
- B – Bucket hook height
- C – Lifting capacities, including bucket linkage (122 kg) and bucket cylinder (109 kg)




When removing linkage or cylinder, lifting capacities can be increased by their respective weights.

* Load is limited by hydraulic capacity rather than tipping. Ratings are based on SAE Standard No. J1097. Rated loads do not exceed 87% of hydraulic lift capacity or 75% of tipping load.


- Rating over front
- Rating over side
- Rating at maximum reach


Lifting Capacity

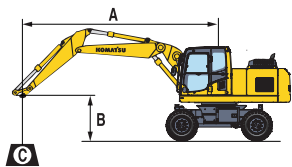
Two-piece boom / undercarriage width 2,55 m

Arm length	A	7,5 m		6,0 m		4,5 m		3,0 m		1,5 m		
		Icon 1	Icon 2	Icon 1	Icon 2	Icon 1	Icon 2	Icon 1	Icon 2	Icon 1	Icon 2	
 Without stabilizer	2,25 m	7,5 m kg	*2.950	2.700					*4.800	4.200		
		6,0 m kg	*2.550	1.800			3.500	2.450	*4.800	4.200		
		4,5 m kg	2.150	1.450	2.200	1.500	3.400	2.400	5.650	3.950		
		3,0 m kg	1.900	1.250	2.200	1.450	3.250	2.200	5.200	3.550		
		1,5 m kg	1.850	1.200	2.100	1.350	3.050	2.050	4.750	3.150		
		0,0 m kg	1.900	1.200	2.050	1.300	2.900	1.900	4.500	2.900		
	- 1,5 m kg	2.150	1.400			2.850	1.850	4.450	2.900	*7.700	5.450	
	- 3,0 m kg											
	- 4,5 m kg											
	2,6 m	7,5 m kg	*2.400	2.400			*2.550	2.400				
		6,0 m kg	*2.100	1.650			3.550	2.500				
		4,5 m kg	2.000	1.300	2.250	1.500	3.450	2.400	*4.900	4.050		
		3,0 m kg	1.800	1.150	2.200	1.450	3.300	2.250	5.300	3.650		
		1,5 m kg	1.700	1.100	2.100	1.400	3.050	2.050	4.800	3.200		
		0,0 m kg	1.750	1.100	2.050	1.300	2.900	1.900	4.550	2.950		
- 1,5 m kg	1.950	1.250	2.000	1.300	2.850	1.850	4.450	2.850	*7.550	5.400		
- 3,0 m kg					2.900	1.900	4.500	2.950				
- 4,5 m kg												
2,9 m	7,5 m kg	*2.050	*2.050			*3.050	2.550					
	6,0 m kg	*1.800	1.500	*2.000	1.500	3.600	2.550					
	4,5 m kg	*1.750	1.200	2.250	1.500	3.450	2.450	*4.100	*4.100			
	3,0 m kg	1.650	1.050	2.200	1.450	3.250	2.250	5.350	3.650			
	1,5 m kg	1.550	950	2.100	1.350	3.050	2.050	4.850	3.200			
	0,0 m kg	1.600	1.000	2.000	1.250	2.850	1.850	4.500	2.900	*4.600	*4.600	
- 1,5 m kg	1.800	1.100	1.950	1.250	2.800	1.800	4.350	2.800	*7.200	5.300		
- 3,0 m kg					2.800	1.800	4.400	2.850				
- 4,5 m kg												
 Front or rear blade	2,25 m	7,5 m kg	*2.950	*2.950					*4.800	*4.800		
		6,0 m kg	*2.550	2.150			*4.650	2.900	*4.800	*4.800		
		4,5 m kg	*2.450	1.750	*3.100	1.800	*5.350	2.800	*5.900	4.600		
		3,0 m kg	*2.450	1.550	4.200	1.750	*5.733	2.650	*7.518	4.200		
		1,5 m kg	*2.600	1.450	4.100	1.700	5.940	2.450	*8.526	3.750		
		0,0 m kg	*2.850	1.500	3.524	1.650	5.850	2.300	*8.536	3.550		
	- 1,5 m kg	*3.400	1.700			5.800	2.300	*8.000	3.500	*7.700	6.700	
	- 3,0 m kg											
	- 4,5 m kg											
	2,6 m	7,5 m kg	*2.400	*2.400			*2.550	*2.550				
		6,0 m kg	*2.100	2.000			*4.100	2.950				
		4,5 m kg	*2.050	1.600	*3.500	1.850	*4.800	2.850	*4.900	4.700		
		3,0 m kg	*2.050	1.400	4.250	1.750	*5.537	2.650	*7.178	4.250		
		1,5 m kg	*2.200	1.350	4.150	1.700	5.990	2.450	*8.330	3.850		
		0,0 m kg	*2.450	1.400	3.524	1.600	5.850	2.300	*8.585	3.550		
- 1,5 m kg	*2.900	1.550	4.050	1.600	5.800	2.250	*8.250	3.500	*7.550	6.650		
- 3,0 m kg					*4.800	2.300	*6.750	3.550				
- 4,5 m kg												
2,9 m	7,5 m kg	*2.050	*2.050			*3.050	2.900					
	6,0 m kg	*1.800	1.800	*2.000	1.800	*3.700	2.950					
	4,5 m kg	*1.750	1.450	*3.500	1.850	*4.250	2.850	*4.100	*4.100			
	3,0 m kg	*1.750	1.300	4.200	1.750	5.341	2.650	*6.839	4.300			
	1,5 m kg	*1.850	1.250	4.100	1.650	*5.940	2.450	*8.085	3.850			
	0,0 m kg	*2.100	1.250	3.480	1.550	5.850	2.300	*8.488	3.550	*4.600	*4.600	
- 1,5 m kg	*2.450	1.400	4.000	1.550	5.750	2.200	*8.350	3.400	*7.200	6.500		
- 3,0 m kg					*5.050	2.200	*7.050	3.450				
- 4,5 m kg												
 Rear outrigger	2,25 m	7,5 m kg	*2.950	*2.950					*4.800	*4.800		
		6,0 m kg	*2.550	2.550			*4.650	3.350	*4.800	*4.800		
		4,5 m kg	*2.450	2.050	*3.100	2.150	*5.297	3.300	*5.900	5.400		
		3,0 m kg	*2.450	1.850	4.450	2.100	*5.733	3.100	*7.518	4.950		
		1,5 m kg	*2.600	1.750	4.350	2.000	*6.188	2.900	*8.526	4.500		
		0,0 m kg	*2.850	1.800	3.741	1.950	6.250	2.800	*8.536	4.300		
	- 1,5 m kg	*3.400	2.050			*5.850	2.750	*8.000	4.250	*7.700	*7.700	
	- 3,0 m kg											
	- 4,5 m kg											
	2,6 m	7,5 m kg	*2.400	*2.400			*2.550	*2.550				
		6,0 m kg	*2.100	*2.100			*4.100	3.450				
		4,5 m kg	*2.050	1.950	*3.500	2.200	*4.800	3.350	*4.900	*4.900		
		3,0 m kg	*2.050	1.700	4.500	2.100	*5.537	3.150	*7.178	5.050		
		1,5 m kg	*2.200	1.650	4.400	2.050	*6.089	2.950	*8.330	4.600		
		0,0 m kg	*2.450	1.700	3.741	1.950	6.250	2.800	*8.585	4.300		
- 1,5 m kg	*2.900	1.900	4.250	1.950	*6.000	2.750	*8.250	4.200	*7.550	*7.550		
- 3,0 m kg					*4.800	2.750	*6.750	4.300				
- 4,5 m kg												
2,9 m	7,5 m kg	*2.050	*2.050			*3.050	*3.050					
	6,0 m kg	*1.800	*1.800	*2.000	*2.000	*3.700	3.450					
	4,5 m kg	*1.750	*1.750	*3.500	2.200	*4.250	3.350	*4.100	*4.100			
	3,0 m kg	*1.750	1.600	*4.350	2.100	*5.341	3.150	*6.839	5.100			
	1,5 m kg	*1.850	1.500	4.350	2.000	*5.940	2.900	*8.085	4.600			
	0,0 m kg	*2.100	1.550	3.698	1.900	6.200	2.750	*8.488	4.250	*4.600	*4.600	
- 1,5 m kg	*2.450	1.700	4.200	1.900	*6.050	2.650	*8.350	4.150	*7.200	*7.200		
- 3,0 m kg					*5.050	2.700	*7.050	4.200				
- 4,5 m kg												



Arm length	A B	⊗		7,5 m		6,0 m		4,5 m		3,0 m		1,5 m		
 Outrigger + blade	2,25 m	7,5 m kg	*2.950	*2.950					*4.800	*4.800				
		6,0 m kg	*2.550	*2.550			*4.650	4.400	*4.800	*4.800				
		4,5 m kg	*2.450	*2.450	*3.100	2.850	*5.350	4.300	*5.900	*5.900				
		3,0 m kg	*2.450	*2.450	*4.800	2.800	*5.850	4.100	*7.673	6.550				
		1,5 m kg	*2.600	2.400	4.800	2.750	*6.250	3.900	8.700	6.100				
		0,0 m kg	*2.850	2.500	*4.750	2.700	*6.350	3.563	*8.624	5.382				
	- 1,5 m kg	*3.400	2.750			*5.850	3.750	*8.000	5.394	*7.700	*7.700			
	- 3,0 m kg													
	- 4,5 m kg													
	2,6 m	7,5 m kg	*2.400	*2.400			*2.550	*2.550						
		6,0 m kg	*2.100	*2.100			*4.100	*4.100						
		4,5 m kg	*2.050	*2.050	*3.500	2.900	*4.800	4.350	*4.900	*4.900				
		3,0 m kg	*2.050	*2.050	*4.600	2.850	*5.650	4.150	*7.326	6.650				
		1,5 m kg	*2.200	*2.200	4.850	2.750	*6.150	3.950	8.500	6.150				
		0,0 m kg	*2.450	2.300	4.750	2.650	*6.350	3.610	*8.673	5.428				
- 1,5 m kg	*2.900	2.550	*4.250	2.650	*6.000	3.700	*8.250	5.394	*7.550	*7.550				
- 3,0 m kg														
- 4,5 m kg														
2,9 m	7,5 m kg	*2.050	*2.050			*3.050	*3.050							
	6,0 m kg	*1.800	*1.800	*2.000	*2.000	*3.700	*3.700							
	4,5 m kg	*1.750	*1.750	*3.500	2.900	*4.250	*4.250	*4.100	*4.100					
	3,0 m kg	*1.750	*1.750	*4.350	2.800	*5.396	4.150	*6.980	*6.700					
	1,5 m kg	*1.850	*1.850	*4.750	2.700	*6.000	3.900	*8.250	6.200					
	0,0 m kg	*2.100	*2.100	*4.700	2.548	*6.250	3.563	*8.575	5.382	*4.600	*4.600			
- 1,5 m kg	*2.450	2.350	*4.400	2.600	*6.050	3.614	*8.350	5.301	*7.200	*7.200				
- 3,0 m kg														
- 4,5 m kg					*5.050	3.650	*7.050	5.750						

 Outrigger front + rear	2,25 m	7,5 m kg	*2.950	*2.950					*4.800	*4.800				
		6,0 m kg	*2.550	*2.550			*4.650	*4.650	*4.800	*4.800				
		4,5 m kg	*2.450	*2.450	*3.100	*3.100	*5.350	5.300	*5.900	*5.900				
		3,0 m kg	*2.450	*2.450	*4.800	3.500	*5.792	5.100	*7.673	*7.750				
		1,5 m kg	*2.600	*2.600	*4.900	3.400	*6.250	4.900	*8.700	7.750				
		0,0 m kg	*2.850	*2.850	*4.750	3.283	*6.350	4.513	*8.624	6.900				
	- 1,5 m kg	*3.400	*3.400			*5.850	4.700	*8.000	6.929	*7.700	*7.700			
	- 3,0 m kg													
	- 4,5 m kg													
	2,6 m	7,5 m kg	*2.400	*2.400			*2.550	*2.550						
		6,0 m kg	*2.100	*2.100			*4.100	*4.100						
		4,5 m kg	*2.050	*2.050	*3.500	*3.500	*4.800	*4.800	*4.900	*4.900				
		3,0 m kg	*2.050	*2.050	*4.600	3.500	*5.594	5.150	*7.326	*7.400				
		1,5 m kg	*2.200	*2.200	*4.850	3.400	*6.150	4.900	*8.500	7.850				
		0,0 m kg	*2.450	*2.450	*4.800	3.283	*6.350	4.513	*8.673	6.946				
- 1,5 m kg	*2.900	*2.900	*4.250	3.350	*6.000	4.700	*8.250	6.929	*7.550	*7.550				
- 3,0 m kg					*4.800	4.700	*6.750	*6.750						
- 4,5 m kg														
2,9 m	7,5 m kg	*2.050	*2.050			*3.050	*3.050							
	6,0 m kg	*1.800	*1.800	*2.000	*2.000	*3.700	*3.700							
	4,5 m kg	*1.750	*1.750	*3.500	*3.500	*4.250	*4.250	*4.100	*4.100					
	3,0 m kg	*1.750	*1.750	*4.350	3.500	*5.450	5.150	*6.980	*7.050					
	1,5 m kg	*1.850	*1.850	*4.750	3.400	*6.000	4.900	*8.250	7.850					
	0,0 m kg	*2.100	*2.100	*4.800	3.234	*6.250	4.465	*8.575	6.900	*4.600	*4.600			
- 1,5 m kg	*2.450	*2.450	*4.400	3.250	*6.050	4.554	*8.350	6.836	*7.200	*7.200				
- 3,0 m kg														
- 4,5 m kg					*5.050	4.650	*7.050	*7.050						



- A – Reach from swing center
- B – Bucket hook height
- C – Lifting capacities, including bucket linkage (122 kg) and bucket cylinder (109 kg)




When removing linkage or cylinder, lifting capacities can be increased by their respective weights.

* Load is limited by hydraulic capacity rather than tipping. Ratings are based on SAE Standard No. J1097. Rated loads do not exceed 87% of hydraulic lift capacity or 75% of tipping load.

- Rating over front
- Rating over side
- Rating at maximum reach

Lifting Capacity

Mono boom / undercarriage width 2,75 m

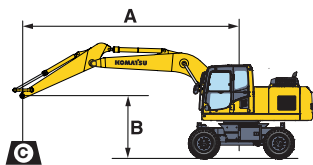
Arm length	A B	7,5 m		6,0 m		4,5 m		3,0 m		1,5 m			
		kg	kg	kg	kg	kg	kg	kg	kg	kg	kg		
 <p>Without stabilizer</p>	2,25 m	7,5 m	kg	*2.700	*2.700								
		6,0 m	kg	*2.450	2.150		3.500	2.800					
		4,5 m	kg	2.200	1.700	2.200	1.750	3.400	2.700	5.650	4.500		
		3,0 m	kg	1.950	1.500	2.150	1.700	3.250	2.550	5.150	4.050		
		1,5 m	kg	1.850	1.400	2.100	1.600	3.000	2.350	4.700	3.600		
		0,0 m	kg	1.900	1.450	2.000	1.550	2.850	2.200	4.450	3.400	*4.600	*4.600
		- 1,5 m	kg	2.100	1.600			2.800	2.150	4.400	3.300	*8.600	6.350
		- 3,0 m	kg	2.650	2.050			2.900	2.200	4.450	3.400	*7.700	6.600
		- 4,5 m	kg										
	2,6 m	7,5 m	kg	*2.200	*2.200								
		6,0 m	kg	*2.000	2.000			3.550	2.850				
		4,5 m	kg	*2.000	1.600	2.250	1.750	3.450	2.750	*5.500	4.600		
		3,0 m	kg	1.800	1.400	2.200	1.700	3.250	2.600	5.250	4.150	10.450	7.800
		1,5 m	kg	1.750	1.300	2.100	1.600	3.050	2.350	4.800	3.700		
		0,0 m	kg	1.750	1.350	2.000	1.550	2.900	2.200	4.500	3.400	*5.300	*5.300
		- 1,5 m	kg	1.950	1.450	2.000	1.500	2.800	2.150	4.400	3.300	*8.350	6.350
		- 3,0 m	kg	2.400	1.850			2.850	2.150	4.450	3.350	*8.750	6.500
		- 4,5 m	kg	*2.700	*2.700					*3.600	3.500		
	2,9 m	7,5 m	kg	*1.900	*1.900			*2.550	*2.550				
		6,0 m	kg	*1.750	*1.750			3.600	2.900				
		4,5 m	kg	*1.700	1.450	2.250	1.750	3.450	2.750				
		3,0 m	kg	1.650	1.250	2.150	1.700	3.250	2.550	5.300	4.200	10.700	8.050
		1,5 m	kg	1.600	1.200	2.050	1.550	3.050	2.350	4.800	3.700		
		0,0 m	kg	1.600	1.200	1.950	1.500	2.850	2.150	4.450	3.350	*5.550	*5.550
		- 1,5 m	kg	1.750	1.300	1.900	1.450	2.750	2.100	4.300	3.250	*8.000	6.200
		- 3,0 m	kg	2.150	1.650			2.750	2.100	4.350	3.250	8.800	6.350
		- 4,5 m	kg	*2.850	2.400					*4.300	3.400	*5.700	*5.700
 <p>Front or rear blade</p>	2,25 m	7,5 m	kg	*2.700	*2.700								
		6,0 m	kg	*2.450	*2.450			*4.400	3.250				
		4,5 m	kg	*2.400	2.050	*2.600	2.050	*5.450	3.150	*6.650	5.150		
		3,0 m	kg	*2.450	1.800	4.250	2.000	*5.950	2.950	*7.850	4.050		
		1,5 m	kg	*2.700	1.700	4.150	1.900	6.100	2.750	*8.600	4.150		
		0,0 m	kg	*3.050	1.750	4.100	1.850	5.900	2.650	*8.650	3.800	*4.600	*4.600
		- 1,5 m	kg	*3.800	1.950			*5.750	2.600	*7.700	3.750	*8.600	7.700
		- 3,0 m	kg	*3.600	2.450			*4.200	2.650	*6.000	4.050	*7.700	*7.700
		- 4,5 m	kg										
	2,6 m	7,5 m	kg	*2.200	*2.200								
		6,0 m	kg	*2.000	*2.000			*3.950	3.300				
		4,5 m	kg	*2.000	1.900	*3.150	2.100	*5.000	3.200	*5.500	5.250		
		3,0 m	kg	*2.050	1.650	4.300	2.000	*5.800	3.000	*7.524	4.700	*12.100	9.200
		1,5 m	kg	*2.250	1.600	4.200	1.900	6.100	2.800	*8.471	4.263		
		0,0 m	kg	*2.600	1.600	4.100	1.850	5.900	2.650	*8.712	3.848	*5.300	*5.300
		- 1,5 m	kg	*3.200	1.800	4.050	1.800	5.850	2.550	*8.020	3.753	*8.350	7.650
		- 3,0 m	kg	*3.700	2.200			*4.700	2.600	*6.550	4.000	*8.750	7.850
		- 4,5 m	kg	*2.700	*2.700					*3.600	*3.600		
	2,9 m	7,5 m	kg	*1.900	*1.900			*2.550	*2.550				
		6,0 m	kg	*1.750	*1.750			*3.650	3.300				
		4,5 m	kg	*1.700	*1.700	*3.250	2.100	*4.450	3.200				
		3,0 m	kg	*1.800	1.550	*4.300	2.000	*5.550	3.000	*7.178	4.753	*11.250	9.450
		1,5 m	kg	*1.950	1.450	4.150	1.900	*6.100	2.800	*8.232	4.263		
		0,0 m	kg	*2.200	1.500	4.050	1.800	5.900	2.600	*8.663	3.800	*5.550	*5.550
		- 1,5 m	kg	*2.700	1.600	4.000	1.750	5.750	2.500	*8.168	3.705	*8.000	7.500
		- 3,0 m	kg	*3.600	1.950			*4.950	2.500	*6.850	3.900	*9.450	7.650
		- 4,5 m	kg	*2.850	*2.850					*4.300	4.100	*5.700	*5.700
 <p>Rear outrigger</p>	2,25 m	7,5 m	kg	*2.700	*2.700								
		6,0 m	kg	*2.450	*2.450			*4.400	3.750				
		4,5 m	kg	*2.400	2.400	*2.600	2.400	*5.450	3.650	*6.633	6.000		
		3,0 m	kg	*2.450	2.100	*4.500	2.350	*5.950	3.500	*7.871	5.440		
		1,5 m	kg	*2.700	2.000	4.700	2.300	*6.350	3.300	*8.624	4.949		
		0,0 m	kg	*3.050	2.050	4.600	2.200	*6.300	3.087	*8.663	4.560	*4.600	*4.600
		- 1,5 m	kg	*3.800	2.300			*5.750	3.038	*7.722	4.513	*8.600	*8.600
		- 3,0 m	kg	*3.600	2.900			*4.200	3.150	*6.000	4.850	*7.700	*7.700
		- 4,5 m	kg										
	2,6 m	7,5 m	kg	*2.200	*2.200								
		6,0 m	kg	*2.000	*2.000			*3.950	3.800				
		4,5 m	kg	*2.000	*2.000	*3.150	2.450	*5.000	3.700	*5.445	*5.500		
		3,0 m	kg	*2.050	2.000	*4.450	2.400	*5.800	3.500	*7.524	5.537	*12.100	11.100
		1,5 m	kg	*2.250	1.900	4.700	2.300	*6.250	3.300	*8.477	5.047		
		0,0 m	kg	*2.600	1.950	4.600	2.200	*6.350	3.007	*8.712	4.608	*5.300	*5.300
		- 1,5 m	kg	*3.200	2.150	*4.050	2.200	*5.900	2.989	*8.019	4.513	*8.350	*8.350
		- 3,0 m	kg	*3.700	2.600			*4.700	3.100	*6.550	4.800	*8.750	*8.750
		- 4,5 m	kg	*2.700	*2.700					*3.600	*3.600		
	2,9 m	7,5 m	kg	*1.900	*1.900			*2.550	*2.550				
		6,0 m	kg	*1.750	*1.750			*3.650	*3.650				
		4,5 m	kg	*1.700	*1.700	*3.250	2.450	*4.450	3.750				
		3,0 m	kg	*1.800	*1.800	*4.300	2.350	*5.550	3.500	*7.178	5.586	*11.250	*11.250
		1,5 m	kg	*1.950	1.750	4.650	2.250	*6.100	3.300	*8.232	5.047		
		0,0 m	kg	*2.200	1.800	4.550	2.150	*6.300	3.038	*8.663	4.560	*5.550	*5.550
		- 1,5 m	kg	*2.700	1.950	*4.350	2.100	*6.000	2.940	*8.168	4.465	*8.000	*8.000
		- 3,0 m	kg	*3.600	2.350			*4.950	3.000	*6.850	4.700	*9.450	*9.450
		- 4,5 m	kg	*2.850	*2.850					*4.300	*4.300	*5.700	*5.700



Arm length	A	7,5 m		6,0 m		4,5 m		3,0 m		1,5 m	

	2,25 m	7,5 m kg	*2.700	*2.700										
		6,0 m kg	*2.450	*2.450			*4.400	*4.400						
		4,5 m kg	*2.400	*2.400	*2.600	*2.600	*5.450	4.650	*6.700	*6.700				
		3,0 m kg	*2.450	*2.450	*4.500	3.050	*5.891	4.450	*7.871	7.150				
		1,5 m kg	*2.700	2.650	*4.950	2.950	*6.350	4.250	*8.800	6.650				
		0,0 m kg	*3.050	2.700	*4.700	2.842	*6.300	3.895	*8.575	5.842	*4.600	*4.600		
	2,6 m	- 1,5 m kg	*3.800	3.000			*5.750	4.050	*7.800	5.796	*8.600	*8.600		
		- 3,0 m kg	*3.600	*3.600			*4.200	4.100	*6.000	*6.000	*7.700	*7.700		
		- 4,5 m kg												
		7,5 m kg	*2.200	*2.200										
		6,0 m kg	*2.000	*2.000			*3.950	*3.950						
		4,5 m kg	*2.000	*2.000	*3.150	*3.150	*5.000	4.700	*5.500	*5.500				
		3,0 m kg	*2.050	*2.050	*4.450	3.100	*5.742	4.500	*7.524	7.250	*12.100	*12.100		
		1,5 m kg	*2.250	*2.250	*4.900	3.000	*6.250	4.250	*8.650	6.700				
		0,0 m kg	*2.600	2.550	*4.800	2.842	*6.350	3.895	*8.624	5.888	*5.300	*5.300		
2,9 m	- 1,5 m kg	*3.200	2.800	*4.050	2.850	*5.900	4.000	*8.100	5.796	*8.350	*8.350	*5.150	*5.150	
	- 3,0 m kg	*3.700	3.450			*4.700	4.050	*6.550	6.350	*8.750	*8.750			
	- 4,5 m kg	*2.700	*2.700					*3.600	*3.600					
	7,5 m kg	*1.900	*1.900			*2.550	*2.550							
	6,0 m kg	*1.750	*1.750			*3.650	*3.650							
	4,5 m kg	*1.700	*1.700	*3.250	3.150	*4.450	*4.450							

	2,25 m	7,5 m kg	*2.700	*2.700										
		6,0 m kg	*2.450	*2.450			*4.400	*4.400						
		4,5 m kg	*2.400	*2.400	*2.600	*2.600	*5.450	*5.450	*6.700	*6.700				
		3,0 m kg	*2.450	*2.450	*4.500	3.750	*5.891	5.500	*7.871	*7.950				
		1,5 m kg	*2.700	*2.700	*4.950	3.650	*6.350	5.250	*8.800	8.400				
		0,0 m kg	*3.050	*3.050	*4.700	3.528	*6.300	4.845	*8.575	7.452	*4.600	*4.600		
	2,6 m	- 1,5 m kg	*3.800	3.750			*5.750	5.050	*7.800	*7.176	*8.600	*8.600		
		- 3,0 m kg	*3.600	*3.600			*4.200	*4.200	*6.000	*6.000	*7.700	*7.700		
		- 4,5 m kg												
		7,5 m kg	*2.200	*2.200										
		6,0 m kg	*2.000	*2.000			*3.950	*3.950						
		4,5 m kg	*2.000	*2.000	*3.150	*3.150	*5.000	*5.000	*5.500	*5.500				
		3,0 m kg	*2.050	*2.050	*4.450	3.800	*5.742	5.550	*7.524	*7.600	*12.100	*12.100		
		1,5 m kg	*2.250	*2.250	*4.900	3.700	*6.250	5.300	*8.650	8.500				
		0,0 m kg	*2.600	*2.600	*4.800	3.528	*6.350	4.845	*8.624	7.498	*5.300	*5.300		
2,9 m	- 1,5 m kg	*3.200	*3.200	*4.050	3.550	*5.900	5.050	*8.100	7.406	*8.350	*8.350	*5.150	*5.150	
	- 3,0 m kg	*3.700	*3.700			*4.700	*4.700	*6.550	*6.550	*8.750	*8.750			
	- 4,5 m kg	*2.700	*2.700					*3.600	*3.600					
	7,5 m kg	*1.900	*1.900			*2.550	*2.550							
	6,0 m kg	*1.750	*1.750			*3.650	*3.650							
	4,5 m kg	*1.700	*1.700	*3.250	*3.250	*4.450	*4.450							



- A – Reach from swing center
- B – Bucket hook height
- C – Lifting capacities, including bucket linkage (122 kg) and bucket cylinder (109 kg)




When removing linkage or cylinder, lifting capacities can be increased by their respective weights.

* Load is limited by hydraulic capacity rather than tipping. Ratings are based on SAE Standard No. J1097. Rated loads do not exceed 87% of hydraulic lift capacity or 75% of tipping load.


- Rating over front
- Rating over side
- Rating at maximum reach


Lifting Capacity

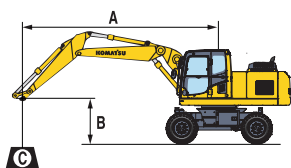
Two-piece boom / undercarriage width 2,75 m

Arm length	A B	⊗		7,5 m		6,0 m		4,5 m		3,0 m		1,5 m		
		⊗	⊗	⊗	⊗	⊗	⊗	⊗	⊗	⊗	⊗	⊗	⊗	
 <p>Without stabilizer</p>	2,25 m	7,5 m kg	*2.950	*2.950						*4.800	4.750			
		6,0 m kg	*2.550	2.100			3.500	2.800	*4.800	4.750				
		4,5 m kg	2.150	1.650	2.200	1.750	3.400	2.700	5.650	4.500				
		3,0 m kg	1.900	1.450	2.200	1.700	3.250	2.550	5.200	4.050				
		1,5 m kg	1.850	1.400	2.100	1.600	3.050	2.350	4.750	3.650				
		0,0 m kg	1.900	1.450	2.050	1.550	2.900	2.250	4.500	3.400				
		- 1,5 m kg	2.150	1.650			2.850	2.200	4.450	3.400	*7.700	6.500		
		- 3,0 m kg												
		- 4,5 m kg												
	2,6 m	7,5 m kg	*2.400	*2.400			*2.550	*2.550						
		6,0 m kg	*2.100	1.900			3.550	2.850						
		4,5 m kg	2.000	1.550	2.250	1.750	3.450	2.750	*4.900	4.600				
		3,0 m kg	1.800	1.350	2.200	1.700	3.300	2.600	5.300	4.150				
		1,5 m kg	1.700	1.300	2.100	1.600	3.050	2.400	4.800	3.700				
		0,0 m kg	1.750	1.350	2.050	1.550	2.900	2.250	4.550	3.450				
		- 1,5 m kg	1.950	1.500	2.050	1.550	2.850	2.200	4.450	3.350	*7.550	6.450		
		- 3,0 m kg					2.900	2.200	4.500	3.450				
		- 4,5 m kg												
	2,9 m	7,5 m kg	*2.050	*2.050			*3.050	2.800						
		6,0 m kg	*1.800	1.750	*2.000	1.750	3.600	2.850						
		4,5 m kg	*1.750	1.400	2.250	1.750	3.500	2.750	*4.100	*4.100				
		3,0 m kg	1.650	1.250	2.200	1.700	3.300	2.600	5.350	4.200				
		1,5 m kg	1.550	1.150	2.100	1.600	3.050	2.350	4.850	3.700				
		0,0 m kg	1.600	1.200	2.000	1.500	2.900	2.200	4.500	3.400	*4.600	*4.600		
		- 1,5 m kg	1.800	1.350	1.950	1.450	2.800	2.100	4.400	3.300	*7.200	6.300		
		- 3,0 m kg					2.800	2.150	4.400	3.350				
		- 4,5 m kg												
 <p>Front or rear blade</p>	2,25 m	7,5 m kg	*2.950	*2.950					*4.800	*4.800				
		6,0 m kg	*2.550	2.450			*4.650	3.250	*4.800	*4.800				
		4,5 m kg	*2.450	2.000	*3.100	2.050	*5.350	3.150	*5.900	5.150				
		3,0 m kg	*2.450	1.750	4.350	2.000	*5.733	3.000	*7.518	4.700				
		1,5 m kg	*2.600	1.700	4.250	1.950	6.138	2.800	*8.526	4.300				
		0,0 m kg	*2.850	1.750	3.654	1.900	6.050	2.650	*8.536	4.050				
		- 1,5 m kg	*3.400	1.950			*5.850	2.600	*8.000	4.050	*7.700	*7.700		
		- 3,0 m kg												
		- 4,5 m kg												
	2,6 m	7,5 m kg	*2.400	*2.400			*2.550	*2.550						
		6,0 m kg	*2.100	*2.100			*4.100	3.300						
		4,5 m kg	*2.050	1.850	*3.500	2.100	*4.800	3.200	*4.900	*4.900				
		3,0 m kg	*2.050	1.650	4.350	2.000	*5.537	3.000	*7.178	4.800				
		1,5 m kg	*2.200	1.550	4.250	1.950	*6.089	2.800	*8.330	4.350				
		0,0 m kg	*2.450	1.600	3.611	1.850	6.050	2.650	*8.585	4.100				
		- 1,5 m kg	*2.900	1.800	4.150	1.850	5.950	2.600	*8.250	4.000	*7.550	*7.550		
		- 3,0 m kg					*4.800	2.650	*6.750	4.100				
		- 4,5 m kg												
	2,9 m	7,5 m kg	*2.050	*2.050			*3.050	*3.050						
		6,0 m kg	*1.800	*1.800	*2.000	*2.000	*3.700	3.300						
		4,5 m kg	*1.750	1.700	*3.500	2.100	*4.250	3.200	*4.100	*4.100				
		3,0 m kg	*1.750	1.500	4.350	2.000	*5.341	3.000	*6.839	4.850				
		1,5 m kg	*1.850	1.450	4.200	1.900	*5.940	2.800	*8.085	4.400				
		0,0 m kg	*2.100	1.450	3.611	1.800	6.000	2.600	*8.488	4.050	*4.600	*4.600		
		- 1,5 m kg	*2.450	1.600	4.100	1.800	5.900	2.550	*8.350	3.950	*7.200	*7.200		
		- 3,0 m kg					*5.050	2.550	*7.050	4.000				
		- 4,5 m kg												
 <p>Rear outrigger</p>	2,25 m	7,5 m kg	*2.950	*2.950					*4.800	*4.800				
		6,0 m kg	*2.550	*2.550			*4.650	3.750	*4.800	*4.800				
		4,5 m kg	*2.450	2.350	*3.100	2.400	*5.350	3.700	*5.900	*5.900				
		3,0 m kg	*2.450	2.100	*4.800	2.400	*5.733	3.500	*7.518	5.550				
		1,5 m kg	*2.600	2.000	4.750	2.300	*6.188	3.300	*8.526	5.100				
		0,0 m kg	*2.850	2.100	4.046	2.250	*6.350	3.150	*8.536	4.900				
		- 1,5 m kg	*3.400	2.350			*5.850	3.150	*8.000	4.850	*7.700	*7.700		
		- 3,0 m kg												
		- 4,5 m kg												
	2,6 m	7,5 m kg	*2.400	*2.400			*2.550	*2.550						
		6,0 m kg	*2.100	*2.100			*4.100	3.800						
		4,5 m kg	*2.050	*2.050	*3.500	2.450	*4.800	3.700	*4.900	*4.900				
		3,0 m kg	*2.050	1.950	*4.600	2.400	*5.537	3.550	*7.178	5.650				
		1,5 m kg	*2.200	1.900	4.750	2.300	*6.089	3.350	*8.330	5.200				
		0,0 m kg	*2.450	1.950	4.046	2.250	*6.350	3.150	*8.585	4.900				
		- 1,5 m kg	*2.900	2.150	*4.250	2.200	*6.000	3.100	*8.250	4.800	*7.550	*7.550		
		- 3,0 m kg					*4.800	3.150	*6.750	4.900				
		- 4,5 m kg												
	2,9 m	7,5 m kg	*2.050	*2.050			*3.050	*3.050						
		6,0 m kg	*1.800	*1.800	*2.000	*2.000	*3.700	*3.700						
		4,5 m kg	*1.750	*1.750	*3.500	2.450	*4.250	3.750	*4.100	*4.100				
		3,0 m kg	*1.750	*1.750	*4.350	2.400	*5.341	3.550	*6.839	5.700				
		1,5 m kg	*1.850	1.750	4.700	2.250	*6.000	3.300	*8.085	5.200				
		0,0 m kg	*2.100	1.800	4.002	2.200	*6.250	3.150	*8.488	4.850	*4.600	*4.600		
		- 1,5 m kg	*2.450	1.950	*4.400	2.150	*6.050	3.050	*8.350	4.750	*7.200	*7.200		
		- 3,0 m kg					*5.050	3.050	*7.050	4.800				
		- 4,5 m kg												



Arm length	A	7,5 m		6,0 m		4,5 m		3,0 m		1,5 m		
 Outrigger + blade	2,25 m	7,5 m kg	*2.950	*2.950					*4.800	*4.800		
		6,0 m kg	*2.550	*2.550			*4.650	*4.650	*4.800	*4.800		
		4,5 m kg	*2.450	*2.450	*3.100	*3.100	*5.350	4.700	*5.900	*5.900		
		3,0 m kg	*2.450	*2.450	4.650	3.100	*5.792	4.500	*7.673	7.200		
		1,5 m kg	*2.600	*2.600	4.550	3.000	*6.250	4.300	*8.700	6.700		
		0,0 m kg	*2.850	2.750	4.500	2.891	*6.350	3.943	*8.624	5.934		
	- 1,5 m kg	*3.400	3.050			*5.850	4.100	*8.000	5.952	*7.700	*7.700	
	- 3,0 m kg											
	- 4,5 m kg											
	2,6 m	7,5 m kg	*2.400	*2.400			*2.550	*2.550				
		6,0 m kg	*2.100	*2.100			*4.100	*4.100				
		4,5 m kg	*2.050	*2.050	*3.500	3.150	*4.800	4.750	*4.900	*4.900		
3,0 m kg		*2.050	*2.050	*4.600	3.100	*5.594	4.550	*7.326	7.300			
1,5 m kg		*2.200	*2.200	4.600	3.000	*6.150	4.300	*8.500	6.800			
0,0 m kg		*2.450	*2.450	4.500	2.891	*6.350	3.943	*8.673	5.980			
- 1,5 m kg	*2.900	2.800	*4.250	2.950	*6.000	4.100	*8.250	5.952	*7.550	*7.550		
- 3,0 m kg					*4.800	4.150	*6.750	6.500				
- 4,5 m kg												
2,9 m	7,5 m kg	*2.050	*2.050			*3.050	*3.050					
	6,0 m kg	*1.800	*1.800	*2.000	*2.000	*3.700	*3.700					
	4,5 m kg	*1.750	*1.750	*3.500	3.150	*4.250	*4.250	*4.100	*4.100			
	3,0 m kg	*1.750	*1.750	*4.350	3.100	*5.450	4.550	*6.978	*7.050			
	1,5 m kg	*1.850	*1.850	4.550	3.000	*6.000	4.300	*8.250	6.800			
	0,0 m kg	*2.100	*2.100	4.450	2.842	*6.250	3.895	*8.575	5.934	*4.600	*4.600	
- 1,5 m kg	*2.450	*2.450	*4.400	2.850	*6.050	4.050	*8.350	5.906	*7.200	*7.200		
- 3,0 m kg					*5.050	4.050	*7.050	6.400				
- 4,5 m kg												

 Outrigger front + rear	2,25 m	7,5 m kg	*2.950	*2.950					*4.800	*4.800		
		6,0 m kg	*2.550	*2.550			*4.650	*4.650	*4.800	*4.800		
		4,5 m kg	*2.450	*2.450	*3.100	*3.100	*5.350	*5.350	*5.900	*5.900		
		3,0 m kg	*2.450	*2.450	*4.800	3.800	*5.792	5.500	*7.673	*7.750		
		1,5 m kg	*2.600	*2.600	*4.900	3.700	*6.250	5.300	*8.700	8.500		
		0,0 m kg	*2.850	*2.850	*4.750	3.577	*6.350	4.893	*8.624	7.544		
	- 1,5 m kg	*3.400	*3.400			*5.850	5.049	*8.000	*7.440	*7.700	*7.700	
	- 3,0 m kg											
	- 4,5 m kg											
	2,6 m	7,5 m kg	*2.400	*2.400			*2.550	*2.550				
		6,0 m kg	*2.100	*2.100			*4.100	*4.100				
		4,5 m kg	*2.050	*2.050	*3.500	*3.500	*4.800	*4.800	*4.900	*4.900		
3,0 m kg		*2.050	*2.050	*4.600	3.800	*5.594	5.550	*7.326	*7.400			
1,5 m kg		*2.200	*2.200	*4.850	3.700	*6.150	5.350	*8.500	*8.500			
0,0 m kg		*2.450	*2.450	*4.800	3.577	*6.350	4.893	*8.673	7.590			
- 1,5 m kg	*2.900	*2.900	*4.250	3.650	*6.000	5.100	*8.250	7.580	*7.550	*7.550		
- 3,0 m kg					*4.800	*4.800	*6.750	*6.750				
- 4,5 m kg												
2,9 m	7,5 m kg	*2.050	*2.050			*3.050	*3.050					
	6,0 m kg	*1.800	*1.800	*2.000	*2.000	*3.700	*3.700					
	4,5 m kg	*1.750	*1.750	*3.500	*3.500	*4.250	*4.250	*4.100	*4.100			
	3,0 m kg	*1.750	*1.750	*4.350	3.800	*5.450	*5.450	*6.980	*7.050			
	1,5 m kg	*1.850	*1.850	*4.750	3.700	*6.000	5.300	*8.250	*8.250			
	0,0 m kg	*2.100	*2.100	*4.800	3.528	*6.250	4.893	*8.575	7.544	*4.600	*4.600	
- 1,5 m kg	*2.450	*2.450	*4.400	3.550	*6.050	5.050	*8.350	7.533	*7.200	*7.200		
- 3,0 m kg					*5.050	*5.050	*7.050	*7.050				
- 4,5 m kg												



- A – Reach from swing center
- B – Bucket hook height
- C – Lifting capacities, including bucket linkage (122 kg) and bucket cylinder (109 kg)

When removing linkage or cylinder, lifting capacities can be increased by their respective weights.

* Load is limited by hydraulic capacity rather than tipping. Ratings are based on SAE Standard No. J1097. Rated loads do not exceed 87% of hydraulic lift capacity or 75% of tipping load.

- Rating over front
- Rating over side
- Rating at maximum reach

Hydraulic Wheeled Excavator

PW180-7

Standard and Optional Equipment

ENGINE

Komatsu SAA6D107E-1 turbocharged common rail direct injection diesel engine	●
EU Stage IIIA compliant	●
Suction type cooling fan	●
Automatic engine warm-up system	●
Engine overheat prevention system	●
Fuel control dial	●
Auto-deceleration function	●
Engine ignition can be password secured on request	●
Batteries 2 × 12 V/120 Ah	●

SAFETY EQUIPMENT

Rear view camera system	●
Electric horn	●
Overload warning device	●
Lockable fuel cap and covers	●
Audible travel alarm	●
Large handrails, rear-view mirrors	●
Battery main switch	●
Boom safety valves	●
Arm safety valve	●
Adjust cylinder safety valve	●
OPG Level II front guard (FOPS)	○
OPG Level II top guard (FOPS)	○
Audible travel alarm (white noise version)	○
Side view camera system	○
Super tone horn (no road approval)	○

SERVICE AND MAINTENANCE

Automatic fuel line de-aeration	●
Double element type air cleaner with dust indicator and auto dust evacuator	●
KOMTRAX™ – Komatsu wireless monitoring system	●
Multi-function video compatible colour monitor with Equipment Management and Monitoring System (EMMS) and efficiency guidance	●
Toolkit	●
Centralised greasing system	●
Automatic greasing system	○

CABIN

SpaceCab™; Highly pressurised and tightly sealed hyper viscous mounted cab with tinted safety glass windows, large roof window with sun shade, pull-up type front window with locking device, removable lower window, front window wiper with intermittent feature, sun roller blind, cigarette lighter, ashtray, luggage shelf, floor mat	●
Heated air suspension seat with lumbar support, height adjustable arm rests and retractable seat belt	●
Automatic climate control system	●
12/24 Volt power supplies	●
Beverage holder and magazine rack	●
Hot and cool box	●
Auxiliary input (MP3 jack)	●
CD radio	○
Adjustable, suspended seat	○
Lower wiper	○
Rain visor (not with OPG)	○

HYDRAULIC SYSTEM

Electronic closed-centre load sensing (E-CLSS) hydraulic system (HydrauMind)	●
Pump and engine mutual control (PEMC) system	●
6-working mode selection system; power mode, economy mode, breaker mode, attachment power and attachment economy mode, and lifting mode	●
PowerMax function	●
Adjustable PPC wrist control levers for arm, boom, bucket and swing, with sliding proportional control for attachments and 5 auxiliary buttons, with FNR switch	●
1. additional hydraulic circuit (HCU-B)	●
2. additional hydraulic circuit (HCU-D)	○
Prepared for hydraulic quick-coupler	○

OTHER EQUIPMENT

Electric refuelling pump with automatic shut off function	●
Single chassis tool box	●
Additional chassis tool box	○
Biodegradable oil for hydraulic system	○
Customised paint	○

UNDERCARRIAGE

Parallel blade (front and/or rear) with cylinder protection	○
2 or 4 outriggers with cylinder protection, individually adjustable	○
Twin tyres 10.00-20 16 PR	○
Twin tyres Bandenmarkt Excavator 315/70 R22.5	○
Twin tyres Nokian 10-20 (L5)	○
Single tyres Michelin 18.00-19.5	○
Tyres Bandenmarkt Grader 315/70 R22.5	○
Fenders	○

DRIVES AND BRAKES

Fully automatic 3-speed transmission driving through front and rear planetary axles	●
Oscillating front axle (10°) with automatic and manual cylinder locking	●
Cruise control	●
2,55 m wide undercarriage	●
2,75 m wide undercarriage	○
20 or 25 km/h speed limitation	○
Transmission guard	○

LIGHTING SYSTEM

Working lights: 2 revolving frame, 1 counterweight (rear), 1 boom (LH)	●
Additional RH boom lamp	○
Beacon + rear facing cab lamp	○
1 or 2 additional beacons on counterweight	○
Additional large capacity cab roof lights (4)	○
LED working lights	○

WORK EQUIPMENT

Mono boom	○
Two-piece boom	○
2,25 m; 2,6 m; 2,9 m arms	○
Clamshell grip bar	○

Further equipment on request

- standard equipment
- optional equipment

Your Komatsu partner:

KOMATSU

**Komatsu Europe
International NV**
Mechelsesteenweg 586
B-1800 VILVOORDE (BELGIUM)
Tel. +32-2-255 24 11
Fax +32-2-252 19 81
www.komatsu.eu

VENSS04803 01/2017

Materials and specifications are subject to change without notice.
KOMATSU is a trademark of Komatsu Ltd. Japan.